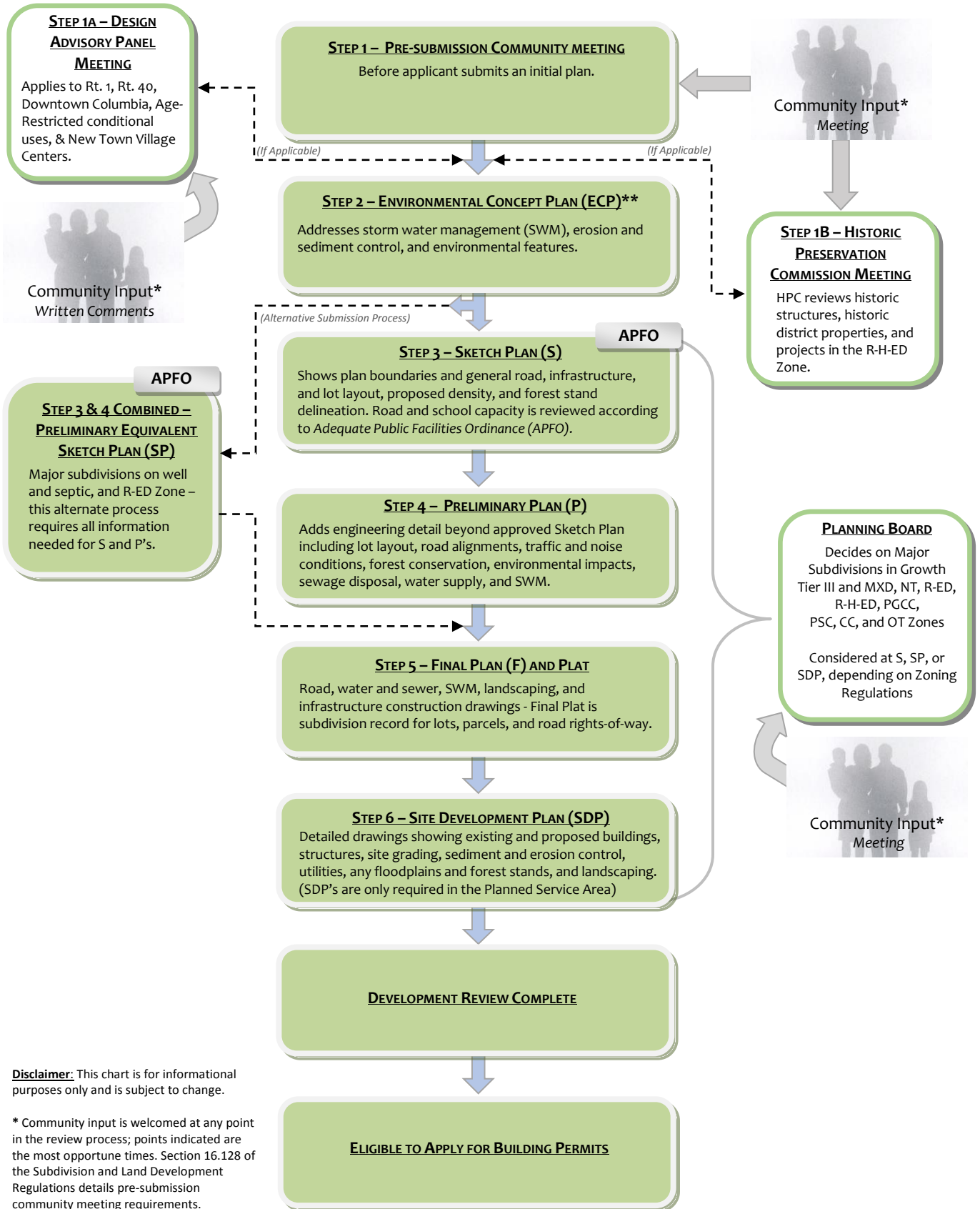


# MAJOR SUBDIVISION PROCESS (5 LOTS OR MORE)



**Disclaimer:** This chart is for informational purposes only and is subject to change.

\* Community input is welcomed at any point in the review process; points indicated are the most opportune times. Section 16.128 of the Subdivision and Land Development Regulations details pre-submission community meeting requirements.

\*\* Environmental Concept Plan (ECP) must be submitted with S or SP and prior to SDP and Resubdivision Final Plans.